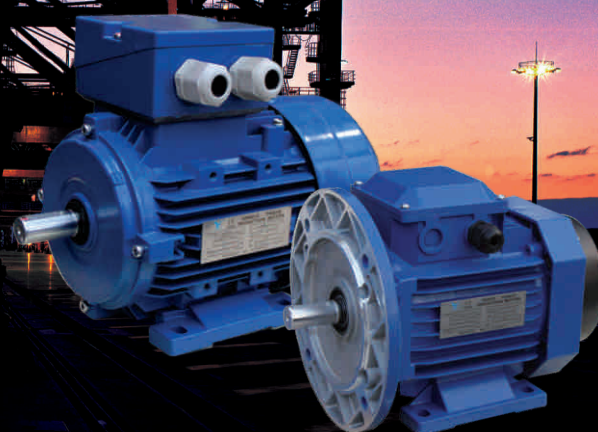




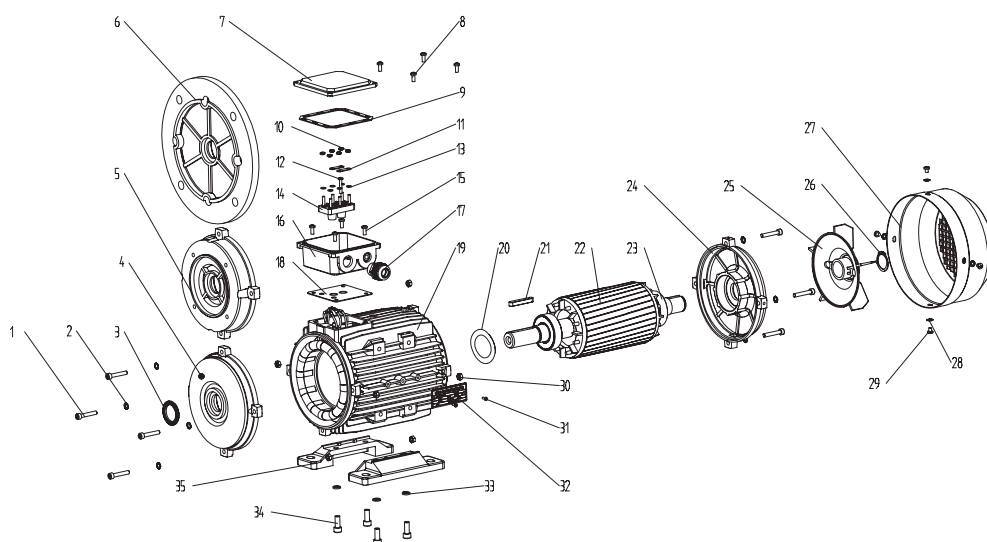
MS Series Three-Phase Induction Motor Aluminum Housing

MS series aluminum housing three-phase asynchronous motors, with latest design in entirety, are made of selected quality materials and conform to the IEC standard.

MS motors have good performance, safety and reliable operation, nice appearance, and can be maintained very conveniently, while with low noise, little vibration and at the same time light weight and simple construction. These series motors can be used for general drive.



Motor Spare Part List Exploded Drawing



1. Screw
2. Gasket
3. Oil seal
4. Front endshield
5. B14 flange
6. B5 flange
7. TB cover
8. TB fixing screws
9. TB upper gasket
10. Terminal board fixing nut
11. Terminal bridge
12. Terminal pin
13. Terminal shim
14. Terminal board
15. TB fixing screws
16. TB base
17. Cable gland
18. TB bottomgasket
19. Frame
20. Preload washer
21. Key
22. Rotor
23. Bearing
24. NDE endshield
25. Cooling fan
26. Fan circlip
27. Fan cover
28. Fan cover fixing shim
29. Fan cover fixing screws
30. Endshield fixing nut
31. Rivet
32. Nameplate
33. Foot fixing nut
34. Foot fixing screws
35. Foot

This catalogue is only a reference for users.
The concrete data be changed please contact with us before ordering.

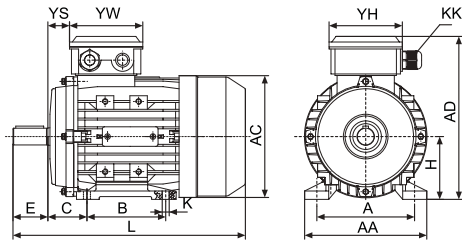
Aluminum Housing Electric Motors Bearings & Oil Seals

Frame	Drive End Bearings	Non-drive End Bearings	Drive End Oil Seals	Non-drive End Oil Seals
56	6201	6201	12×22×5	12×22×5
63	6201	6201	12×24×5	12×24×5
71	6202	6202	15×25×7	15×25×7
80	6204	6204	20×34×7	20×34×7
90S	6205	6205(6204)**	25×37×7	25×37×7(20×34×7)**
90L	6205	6205(6204)**	25×37×7	25×37×7(20×34×7)**
100	6206	6206	30×44×7	30×44×7
112	6306	6206(6306)	30×44×7	30×44×7
132S	6308	6208(6308)	40×58×7	40×58×7
132M/L	6308	6208(6308)	40×58×7	40×58×7
160M	6309	6309	45×65×8	45×65×8
160L	6309	6309	45×65×8	45×65×8
180M	6311	6211	55×72×8	55×72×8
180L	6311	6211	52×72×8	55×72×8

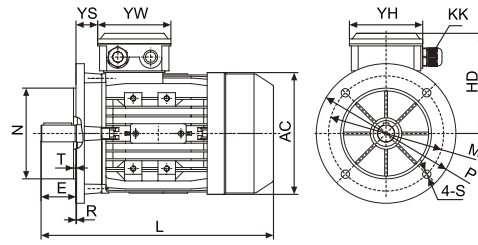
**Other standards are also available on request, the figures in brackets() are for the MC/ML single-phase motors



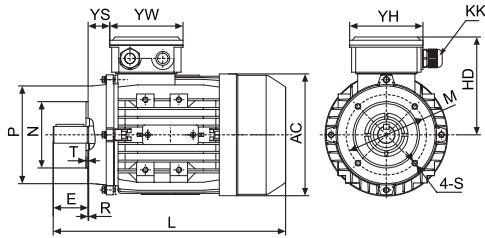
MS series Three Phase Induction Motor



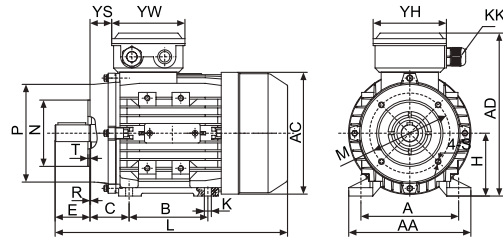
IM B3



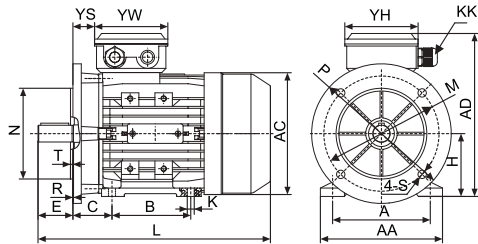
IM B5



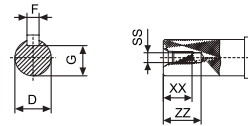
IM B14



IM B34



IM B35



Overall Installation Dimension

Frame	Foot Mounting					Shaft					General											
	H	A	B	C	K	D	E	F	G	SS	XX	ZZ	AA	AD	HD	AC	L	MSEJ*	KK	YS	YW	YH
56	56	90	71	36	5.8x8.8	ø9	20	3	7.2	M3	9	12	110	156	100	ø117	196	232	1-M16x1.5	14	88	88
63	63	100	80	40	7x10	ø11	23	4	8.5	M4	10	14	120	171	108	ø130	220	258	1-M16x1.5	14	94	94
71**	71	112	90	45	7x10	ø14	30	5	11	M5	12	17	132	186	115	ø147	241(255)	282(296)	1-M20x1.5	20	94	94
80	80	125	100	50	10x13	ø19	40	6	15.5	M6	16	21	160	213	133	ø163	290	339	1-M20x1.5	27	105	105
90S	90	140	100	56	10x13	ø24	50	8	20	M8	19	25	175	229	139	ø183	312	361	1-M20x1.5	30	105	105
90L1/L2	90	140	125	56	10x13	ø24	50	8	20	M8	19	25	175	229	139	ø183	337/367	386/416	1-M20x1.5	30	105	105
100**	100	160	140	63	12x15	ø28	60	8	24	M10	22	30	198	252	152	ø205	369/387	425(443)	2-M20x1.5	26	105	105
112	112	190	140	70	12x15	ø28	60	8	24	M10	22	30	220	279	167	ø229	395	463	2-M20x1.5	32	112	112
132S	132	216	140	89	12x15	ø38	80	10	33	M12	28	37	252	318	186	ø265	437	497	2-M20x1.5	38	112	112
132M/L	132	216	178	89	12x15	ø38	80	10	33	M12	28	37	252	318	186	ø265	475/501	535/561	2-M20x1.5	38	112	112
160M/L	160	254	210/254	108	15x19	ø42	110	12	37	M16	36	45	290	384	224	ø325	640	697	2-M20x1.5	64	143	143
180M/L	180	279	241/279	121	15x25	ø48	110	14	42.5	M16	36	45	340	440	260	ø368	730		2-M20x1.5	73	190	190

Frame	B5						B5R						B14						B14B					
	M	N	P	T	S	R	M	N	P	T	S	R	N	M	P	T	S	R	N	M	P	T	S	R
56	ø100	ø80	ø120	3.0	ø7	0							ø50	ø65	ø80	2.5	M5	0						
63	ø115	ø95	ø140	3.0	ø10	0							ø60	ø75	ø90	2.5	M5	0	ø80	ø100	ø120	3.0	M6	0
71**	ø130	ø110	ø160	3.5	ø10	0	ø115	ø95	ø140	3.5	ø10	0	ø70	ø85	ø105	2.5	M6	0	ø95	ø115	ø140	3.0	M8	0
80	ø165	ø130	ø200	3.5	ø12	0	ø130	ø110	ø160	3.5	ø10	0	ø80	ø100	ø120	3.0	M6	0	ø110	ø130	ø160	3.5	M8	0
90S	ø165	ø130	ø200	3.5	ø12	0	ø130	ø110	ø160	3.5	ø10	0	ø95	ø115	ø140	3.0	M8	0	ø110	ø130	ø160	3.5	M8	0
90L1/L2	ø165	ø130	ø200	3.5	ø12	0	ø130	ø110	ø160	3.5	ø10	0	ø95	ø115	ø140	3.0	M8	0	ø110	ø130	ø160	3.5	M8	0
100**	ø215	ø180	ø250	4.0	ø15	0	ø165	ø130	ø200	4.0	ø12	0	ø110	ø130	ø160	3.5	M8	0	ø130	ø165	ø200	3.5	M10	0
112	ø215	ø180	ø250	4.0	ø15	0	ø165	ø130	ø200	4.0	ø12	0	ø110	ø130	ø160	3.5	M8	0	ø130	ø165	ø200	3.5	M10	0
132S	ø265	ø230	ø300	4.0	ø15	0	ø215	ø180	ø250	4.0	ø15	0	ø130	ø165	ø200	4.0	M10	0	ø180	ø215	ø250	4.0	M12	0
132M/L	ø265	ø230	ø300	4.0	ø15	0	ø215	ø180	ø250	4.0	ø15	0	ø130	ø165	ø200	4.0	M10	0	ø180	ø215	ø250	4.0	M12	0
160M/L	ø300	ø250	ø350	5.0	ø19	0							ø180	ø215	ø250	4.0	M12	0						
180M/L	ø300	ø250	ø350	5.0	ø19	0																		

*This data is provided for MSEJ series Brake motors both with and without hand release lever.

**This frame size has two housing sizes, the rated output is for normal "L" size, and increased output for the bigger "L" size (refer to the figures in the bracket("))

MS series Three Phase Induction Motor



Model	Output		Voltage (V)	Current (A)	Speed (r.p.m)	Eff (%)	Power Factor	Start torque Rated torque	Start current Rated current	Max. torque Rated torque	Noise (dBA)	Weight kGS
	KW	HP										
2-Pole Synchronous 3000RPM 50Hz												
MS56A2	0.09	0.12	220/380	0.56/0.32	2800	62	0.68	2.3	6.0	2.4	58	2.6
MS56B2	0.12	0.16	220/380	0.66/0.38	2800	67	0.71	2.3	6.0	2.4	58	3.0
MS63A2	0.18	0.24	220/380	0.92/0.53	2800	69	0.75	2.3	6.0	2.4	61	4.0
MS63B2	0.25	0.33	220/380	1.17/0.68	2800	72	0.78	2.3	6.0	2.4	61	4.2
MS71A2	0.37	0.50	220/380	1.66/0.96	2800	74	0.80	2.3	6.0	2.4	64	5.2
MS71B2	0.55	0.75	220/380	2.34/1.35	2800	76	0.82	2.3	6.0	2.4	64	6.0
MS80A2	0.75	1.0	220/380	3.04/1.75	2800	77	0.85	2.3	6.0	2.4	67	8.7
MS80B2	1.1	1.5	220/380	4.42/2.55	2800	77	0.85	2.3	6.5	2.4	67	10.0
MS90S2	1.5	2.0	220/380	5.94/3.44	2800	78	0.85	2.3	6.5	2.4	72	12.0
MS90L2	2.2	3.0	220/380	8.36/4.83	2800	81	0.86	2.3	6.5	2.4	72	14.5
MS100L2	3.0	4.0	220/380	11.1/6.39	2870	82	0.87	2.3	7.0	2.4	76	20.0
MS112M2	4.0	5.5	380/660	8.17/4.72	2890	86	0.87	2.3	7.0	2.4	77	26.0
MS132SA2	5.5	7.5	380/660	11.1/6.41	2900	86	0.88	2.3	7.0	2.4	80	38.4
MS132SB2	7.5	10	380/660	15.0/8.67	2900	86	0.88	2.3	7.0	2.4	80	41.3
MS160MA2	11.0	15	380/660	21.6/12.5	2930	88	0.88	2.0	7.0	2.2	86	76.0
MS160MB2	15.0	20	380/660	28.8/16.6	2930	89	0.89	2.0	7.0	2.2	86	77.5
MS160L2	18.5	25	380/660	34.7/20.0	2930	90	0.90	2.0	7.0	2.2	86	92.0
MS180M2	22.0	30	380/660	41.6/23.7	2930	91	0.90	2.0	7.0	2.2	91	121.0
4-Pole Synchronous 1500RPM 50Hz												
MS56A4	0.06	0.08	220/380	0.49/0.28	1400	56	0.58	2.2	5.5	2.3	50	2.9
MS56B4	0.09	0.12	220/380	0.67/0.39	1400	58	0.61	2.2	5.5	2.3	50	3.2
MS63A4	0.12	0.16	220/380	0.84/0.48	1400	60	0.63	2.2	5.5	2.3	52	3.7
MS63B4	0.18	0.24	220/380	1.12/0.65	1400	64	0.66	2.2	5.5	2.3	52	4.2
MS71A4	0.25	0.33	220/380	1.44/0.83	1400	67	0.68	2.2	5.5	2.3	55	5.0
MS71B4	0.37	0.50	220/380	1.95/1.12	1400	70	0.72	2.2	5.5	2.3	55	5.8
MS80A4	0.55	0.75	220/380	2.70/1.56	1400	74	0.73	2.3	6.0	2.4	58	8.1
MS80B4	0.75	1.0	220/380	3.49/2.01	1400	76	0.75	2.3	6.0	2.4	58	9.1
MS90S4	1.1	1.5	220/380	4.76/2.75	1400	78	0.78	2.3	6.0	2.4	61	11.7
MS90L4	1.5	2.0	220/380	6.32/3.65	1400	79	0.79	2.3	6.0	2.4	61	14.4
MS100LA4	2.2	3.0	220/380	8.94/5.16	1430	79	0.82	2.3	7.0	2.4	64	19.2
MS100LB4	3	4.0	220/380	12.0/6.95	1430	81	0.81	2.3	7.0	2.4	64	22.5
MS112M4	4	5.5	380/660	8.98/5.19	1400	83	0.82	2.3	7.0	2.4	65	29.0
MS132S4	5.5	7.5	380/660	11.8/6.80	1400	85	0.84	2.3	7.0	2.4	71	39.0
MS132M4	7.5	10	380/660	15.7/9.05	1400	86	0.85	2.3	7.0	2.4	71	48.6
MS160M4	11	15	380/660	22.3/12.9	1460	88	0.85	2.0	7.0	2.2	75	73.0
MS160L4	15	20	380/660	30.1/17.4	1460	89	0.85	2.0	7.0	2.2	75	88.5
MS180M4	18.5	25	380/660	36.5/21.1	1470	91	0.85	2.2	7.0	2.2	80	118.0
MS180L4	22	30	380/660	43.2/25.0	1470	91	0.85	2.2	7.0	2.2	80	128.0
6-Pole Synchronous 1000RPM 50Hz												
MS63A6	0.09	0.12	220/380	0.92/0.53	900	56	0.65	2.2	5.5	2.2	50	4.2
MS63B6	0.12	0.15	220/380	1.13/0.65	900	57	0.66	2.2	5.5	2.2	50	4.5
MS71A6	0.18	0.25	220/380	1.26/0.73	900	57	0.66	2.2	5.5	2.2	52	5.6
MS71B6	0.25	0.33	220/380	1.64/0.95	900	59	0.68	2.0	5.5	2.2	52	6.0
MS80A6	0.37	0.50	220/380	2.24/1.30	900	62	0.70	2.0	5.5	2.2	56	8.1
MS80B6	0.55	0.75	220/380	3.09/1.79	900	65	0.72	2.0	5.5	2.2	56	9.6
MS90S6	0.75	1.0	220/380	3.89/2.25	910	73	0.70	2.0	5.5	2.2	59	11.3
MS90L6	1.1	1.5	220/380	5.47/3.16	910	74	0.72	2.1	5.5	2.2	59	14.4
MS100L6	1.5	2.0	220/380	6.88/3.98	940	78	0.74	2.1	5.5	2.2	61	18.8
MS112M6	2.2	3.0	220/380	9.72/5.61	940	81	0.74	2.1	6.5	2.3	64	25.0
MS132S6	3	4.0	220/380	12.5/7.23	960	83	0.76	2.2	6.5	2.3	64	35.0
MS132MA6	4	5.5	380/660	9.40/5.43	960	84	0.77	2.2	6.5	2.3	68	47.6
MS132MB6	5.5	7.5	380/660	12.6/7.25	960	85	0.78	2.0	6.5	2.3	68	50.7
MS160M6	7.5	10	380/660	16.6/9.56	970	86	0.80	2.0	7.0	2.0	68	70.0
MS160L6	11	15	380/660	24.2/14.0	970	88	0.79	2.0	7.0	2.0	73	87.0
MS180L6	15	20	380/660	31.6/18.3	970	89	0.81	2.0	7.0	2.0	79	122.0
8-Pole Synchronous 750RPM 50Hz												
MS71A8	0.09	0.12	220/380	0.88/0.51	630	50	0.60	1.8	4.0	4.0	50	5.6
MS71B8	0.12	0.15	220/380	1.05/0.61	630	51	0.61	1.8	4.0	4.0	50	6.0
MS80A8	0.18	0.25	220/380	1.52/0.88	630	51	0.61	1.8	4.0	4.0	52	9.4
MS80B8	0.25	0.33	220/380	1.92/1.11	640	54	0.61	1.8	4.0	4.0	52	10.1
MS90S8	0.37	0.50	220/380	2.45/1.42	660	62	0.61	1.8	4.0	4.0	56	12.5
MS90L8	0.55	0.75	220/380	3.36/1.94	660	63	0.61	1.8	4.0	4.0	56	15.3
MS100LA8	0.75	1.0	220/380	4.45/2.58	690	71	0.67	1.8	4.0	4.0	59	17.2
MS100LB8	1.1	1.5	220/380	5.81/3.36	690	73	0.69	1.8	5.0	5.0	59	19.5
MS112M8	1.5	2.0	220/380	7.82/4.53	680	75	0.69	1.8	5.0	5.0	61	25.5
MS132S8	2.2	3.0	220/380	10.8/6.28	710	78	0.71	1.8	6.0	6.0	64	34.2
MS132M8	3	4.0	220/380	14.0/8.11	710	79	0.73	1.8	6.0	6.0	64	40.0
MS160MA8	4	5.5	380/660	10.4/5.99	720	81	0.73	1.9	6.0	6.0	68	59.0
MS160MB8	5.5	7.5	380/660	13.5/7.79	720	83	0.74	2.0	6.0	6.0	68	69.0
MS160L8	7.5	10	380/660	17.9/10.3	720	86	0.75	2.0	6.0	6.0	68	87.0
MS180L8	11	15	380/660	26.2/15.1	720	87	0.75	2.0	6.0	6.0	78	125.0