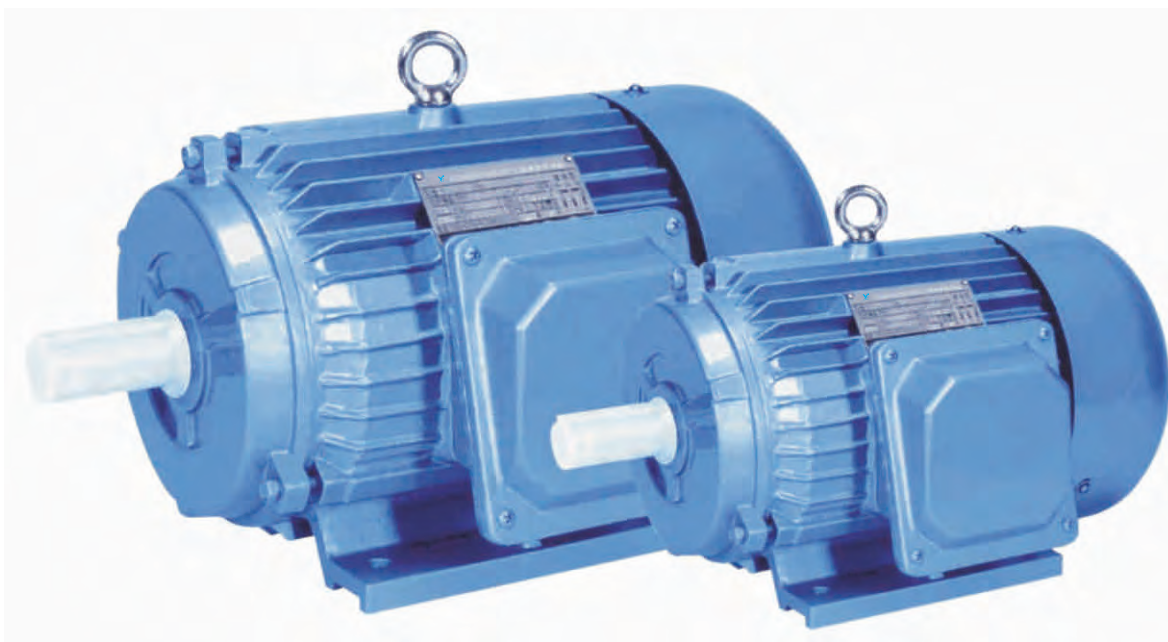




Y系列三相异步电动机



Y 系列电动机是全封闭自扇冷式鼠笼型三相异步电动机，是最新设计的基本系列。符合IEC标准的有关规定。具有高效、节能，起动转矩大，噪声低，振动小，可靠性高，使用维修方便等特点。广泛应用于不含易燃、易爆或腐蚀性气体的一般场合和无特殊要求的机械设备上，如金属切削机床、泵、风机、农业机械、搅拌机、运输机械和食品机械等。

Y series motor is totally enclosed and fan-cooling three-phase squirrel cage induction motor, which is newly designed in conformity with the relevant requirement of IEC standards. Have outstanding performance, such as high efficiency, energy-saving, high starting torque, low noise, little vibration, reliable operation and easy maintenance, etc. Are widely used in places, where do not exists combustibile, explosive or corrosive gas, and without any special requirements, such as machine tools, pumps, fans, transport machinery, mixer, agriculture machinery and food machines, etc.

使用条件

环境温度：-15℃

额定频率：50Hz、60Hz

防护等级：IP44、IP54、IP55

绝缘等级：B、F 冷却方式：IC0141

工作方式：S1 接法：3kW及以下Y接法，
4kW及以上为△接法。

OPERATING CONDITIONS

Ambient temperature：-15℃<Q<40OC&NBSP;&NBSP;&NBSP;

Altitude：not exceed 1000m

Rated voltage：380V or any voltage between 220V-760V

Rated frequency：50Hz、60Hz

Protection class：IP44、IP54、IP55

Insulation class：B、F

Cooling method：IC0141

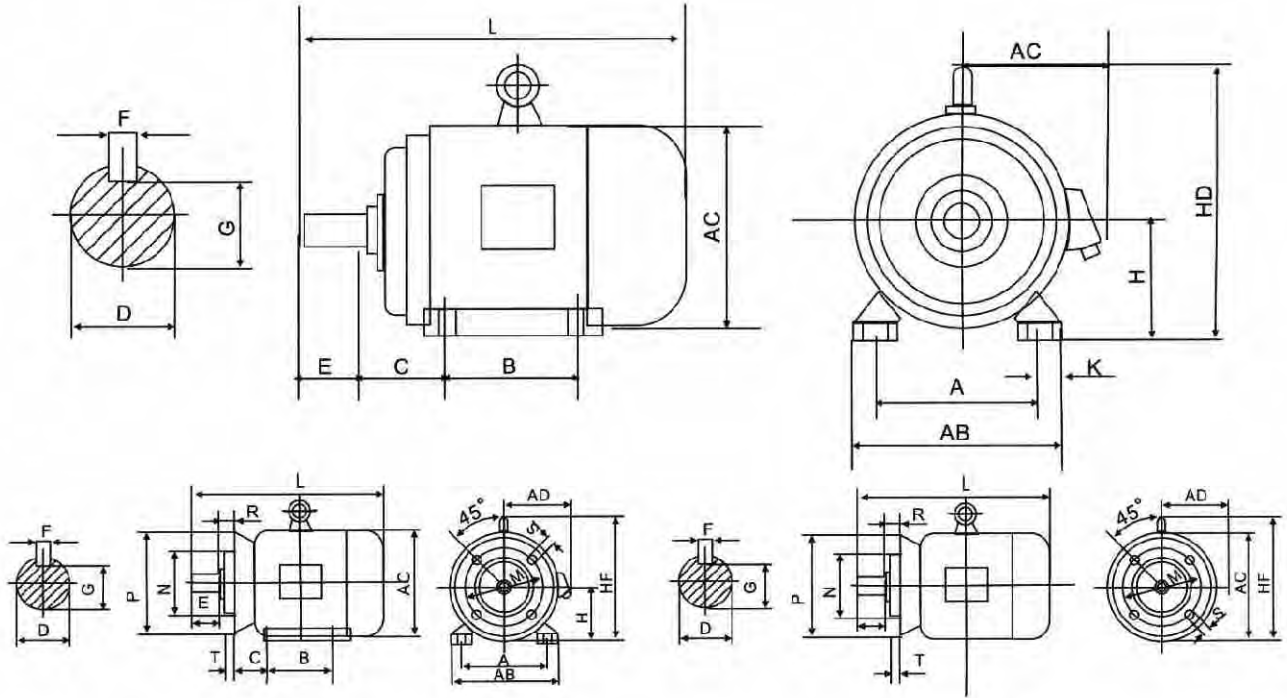
Duty：S1(continuous)

Connection：Star-connection for up to 3kW,
delta-connecti for 4kW and above



Y SERIES THREE-PHASE ASYNCHRONOUS INDUCTION MOTOR

外形及安装尺寸 OVERALL AND MOUNTING DIMENSIONS



机座号 Frame size	极数 Poles	安装尺寸 Mounting dimensions (mm)														外形尺寸 Overall dimensions					
		A	B	C	D	E	F	G	H	K	M	N	P	R	S	T	AB	AC	AD	HD	L
Y80	2.4	125	100	50	19	40	6	15.5	80	10	165	130	200	0	12	3.5	165	175	150	175	290
Y90S	2.4.6	140	100	56	24	50	8	20.0	90	10	165	130	200	0	12	3.5	180	195	160	195	315
Y90L	2.4.6	140	125	56	24	50	8	20.0	90	10	165	130	200	0	12	3.5	180	195	160	195	340
Y100L	2.4.6	160	140	70	28	60	8	24.0	100	12	215	180	250	0	15	4.0	205	215	180	245	380
Y112M	2.4.6	190	140	70	28	60	8	24.0	112	12	215	180	250	0	15	4.0	245	240	190	265	400
Y132S	2.4.6.8	216	140	89	38	80	10	33.0	132	12	265	230	300	0	15	4.0	280	275	210	315	475
Y132M	2.4.6.8	216	178	89	38	80	10	33.0	132	12	265	230	300	0	15	4.0	280	275	210	315	515
Y160M	2.4.6.8	254	210	108	42	110	12	37.0	160	15	300	250	350	0	19	5.0	325	325	255	385	600
Y160L	2.4.6.8	254	254	108	42	110	12	37.0	160	15	300	250	350	0	19	5.0	325	325	255	385	645
Y180M	2.4.6.8	279	241	121	48	110	14	42.5	180	15	300	250	350	0	19	5.0	355	360	285	430	670
Y180L	2.4.6.8	279	279	121	48	110	14	42.5	180	15	300	250	350	0	19	5.0	355	360	285	430	710
Y200L	2.4.6.8	318	305	133	55	110	16	49.0	200	19	350	300	400	0	19	5.0	395	400	310	475	775
Y225S	4.8	356	286	149	60	140	18	53.0	225	19	400	350	450	0	19	5.0	435	435	345	520	820
Y225M	2	356	311	149	60	110	16	49.0	225	19	400	350	450	0	19	5.0	435	435	345	520	615
	4.6.8	356	311	149	55	140	18	53.0	225	19	400	350	450	0	19	5.0	435	435	345	520	845
Y250M	2	406	349	168	60	140	18	53.0	250	24	500	450	550	0	19	5.0	490	515	385	575	30
	4.6.8	406	349	168	65	140	18	58.0	250	24	500	450	550	0	19	5.0	490	515	385	576	930
Y280S	2	457	368	190	65	140	18	58.0	280	24	500	450	550	0	19	5.0	550	585	410	640	1000
	4.6.8	457	368	190	75	140	20	67.5	280	24	500	450	550	0	19	5.0	550	585	410	640	1000
Y280M	2	457	419	190	65	140	18	58.0	280	24	500	450	550	0	19	5.0	550	685	410	640	1050
	4.6.8	457	419	190	75	140	20	67.5	280	24	500	450	550	0	19	5.0	550	585	410	640	1050
Y315S	2	508	406	216	65	140	18	58.0	315	28	600	550	660	0	24	6.0	744	645	576	865	1240
	4.6.8.10	508	406	216	80	170	22	71.0	315	28	600	550	660	0	24	6.0	744	645	576	865	1270
Y315M	2	508	457	216	65	140	18	58.0	315	28	600	550	660	0	24	6.0	744	645	576	865	1310
	4.6.8.10	508	457	216	80	170	22	71.0	315	28	600	550	660	0	24	6.0	744	645	576	865	1340
Y315L	2	508	508	216	65	140	18	58.0	315	28	600	550	660	0	24	6.0	744	645	576	865	1310
	4.6.8.10	508	508	216	80	170	22	71.0	315	28	600	550	660	0	24	6.0	744	645	576	865	1340
Y355M	2	610	560	254	75	140	20	67.5	315	28	740	680	800	0	24	6.0	740	750	680	1035	1540
	4.6.8.10	610	560	254	95	170	25	86.0	315	28	740	680	800	0	24	6.0	740	750	680	1035	1570
Y355L	2	610	630	254	75	140	20	67.5	315	28	740	680	800	0	24	6.0	740	750	680	1035	1540
	4.6.8.10	610	630	254	95	170	25	86.0	315	28	740	680	800	0	24	6.0	740	750	680	1035	1570



技术数据 TECHNICAL DATA

型号 Model	功率 Output		满载时 Full load				75%负载时 75% load		50%负载时 50% load		堵转转矩 Tstar/Un	堵转电流 Ist/In	最大转矩 Tmax/In
	kW	HP	电流 Current (A)	转速 Speed (r/min)	效率 Eff (%)	功率因数 Power Factor	效率 Eff (%)	功率因数 Power Factor	效率 Eff (%)	功率因数 Power Factor			
同步转速3000转/分(2极)380V 50Hz SynchronousSpeed3000r/min(2poles)													
Y801-2	0.75	1.00	1.81	2830	75.0	0.84	73.8	0.79	72.00	0.68	2.2	6.5	2.3
Y802-2	1.10	1.50	2.52	2830	77.0	0.86	76.5	0.81	74.00	0.71	2.2	7.0	2.3
Y90S-2	1.50	2.00	3.44	2840	78.0	0.85	77.5	0.80	76.00	0.71	2.2	7.0	2.3
Y90L-2	2.20	3.00	4.83	2840	80.5	0.86	79.7	0.82	77.60	0.73	2.2	7.0	2.3
Y100L-2	3.00	4.00	6.39	2870	82.0	0.87	81.3	0.83	79.30	0.74	2.2	7.0	2.3
Y112M-2	4.00	5.50	8.17	2890	85.5	0.87	84.8	0.83	82.80	0.73	2.2	7.0	2.3
Y132S1-2	5.50	7.50	11.1	2900	85.5	0.88	84.9	0.86	83.00	0.79	2.0	7.0	2.3
Y132S2-2	7.50	10.0	15.0	2900	86.2	0.88	85.5	0.86	84.00	0.79	2.0	7.0	2.3
Y160M1-2	11.0	15.0	21.8	2930	87.2	0.88	86.5	0.88	85.00	0.79	2.0	7.0	2.3
Y160M2-2	15.0	20.0	29.4	2930	88.2	0.88	87.6	0.85	86.40	0.80	2.0	7.0	2.3
Y160L-2	18.5	25.0	35.5	2930	89.0	0.89	88.5	0.86	87.20	0.81	2.0	7.0	2.2
Y180M-2	22.0	30.0	42.2	2940	89.0	0.89	88.1	0.87	87.00	0.81	2.0	7.0	2.2
Y200L1-2	30.0	40.0	56.9	2950	90.0	0.89	88.7	0.86	87.20	0.79	2.0	7.0	2.2
Y200L2-2	37.0	50.0	69.8	2950	90.5	0.89	89.7	0.86	88.00	0.80	2.0	7.0	2.2
Y225M-2	45.0	60.0	83.9	2970	91.7	0.89	90.7	0.87	89.70	0.82	2.0	7.0	2.2
Y250M-2	55.0	75.0	103	2970	91.5	0.89	90.6	0.86	89.50	0.82	2.0	7.0	2.2
Y280S-2	75.0	100	139	2970	92.0	0.89	91.0	0.86	90.10	0.82	2.0	7.0	2.2
Y280M-2	90.0	125	166	2970	92.5	0.89	91.4	0.86	90.90	0.84	2.0	7.0	2.2
Y315S-2	110	150	203	2980	92.5	0.89	91.4	0.86	90.90	0.84	1.8	6.8	2.2
Y315M-2	132	180	242	2980	93.0	0.89	91.8	0.87	90.80	0.84	1.8	6.8	2.2
Y315L1-2	160	220	292	2980	93.5	0.89	91.9	0.87	91.00	0.84	1.8	6.8	2.2
Y315L2-2	200	270	365	2980	93.5	0.89	92.3	0.87	91.20	0.84	1.8	6.8	2.2
Y335M-2	250	340	444	2980	94.5	0.90	93.3	0.88	92.50	0.85	1.6	7.0	2.2
Y335L-2	315	430	556	2980	95.5	0.90	93.9	0.88	92.80	0.85	1.6	7.1	2.2
同步转速1500转/分(4极)380V 50Hz SynchronousSpeed1500r/min(4poles)													
Y801-4	0.55	0.75	1.51	1390	73.0	0.76	71.5	0.66	70.0	0.52	2.4	6.0	2.3
Y802-4	0.75	1.00	2.01	1390	74.5	0.76	73.0	0.67	71.0	0.56	2.3	6.0	2.3
Y90S-4	1.10	1.50	2.75	1400	78.0	0.78	77.0	0.71	74.8	0.58	2.3	6.5	2.3
Y90L-4	1.50	2.00	3.65	1400	79.0	0.79	77.5	0.72	76.0	0.61	2.3	8.5	2.3
Y100L1-4	2.20	3.00	5.03	1430	81.0	0.82	80.3	0.74	78.2	0.61	2.2	7.0	2.3
Y100L2-4	3.00	4.00	6.82	1430	82.5	0.81	81.6	0.75	80.0	0.63	2.2	7.0	2.3
Y112M-4	4.00	5.50	8.77	1440	84.5	0.82	83.3	0.76	81.8	0.64	2.2	7.0	2.3
Y132S-4	5.50	7.50	11.6	1440	85.5	0.84	84.2	0.78	82.9	0.68	2.2	7.0	2.3
Y132M-4	7.50	10.0	15.4	1440	87.0	0.85	86.1	0.80	84.9	0.70	2.2	7.0	2.3
Y160M-4	11.0	15.0	22.6	1460	88.0	0.84	87.4	0.79	85.1	0.68	2.2	7.0	2.3
Y160L-4	15.0	20.0	30.3	1470	88.5	0.85	87.8	0.80	86.1	0.69	2.2	7.0	2.3
Y180M-4		25.0	35.9	1470	91.0	0.86	89.9	0.81	88.0	0.71	2.0	7.0	2.3
Y180L-4	22.0	30.0	42.5	1470	91.5	0.86	90.7	0.81	90.1	0.72	2.0	7.0	2.2
Y200L-4	30.0	40.0	56.8	1480	92.2	0.87	91.3	0.82	90.5	0.73	2.0	7.0	2.2
Y225S-4	37.0	50.0	70.4	1480	91.8	0.87	91.1	0.84	90.5	0.78	1.9	7.0	2.2
Y225M-4	45.0	60.0	84.2	1480	92.3	0.88	91.6	0.85	90.6	0.79	1.9	7.0	2.2
Y250M-4	55.0	75.0	103	1480	92.6	0.88	91.5	0.84	90.9	0.76	2.0	7.0	2.2
Y280S-4	75.0	100	140	1480	92.7	0.88	91.7	0.84	91.0	0.77	1.9	7.0	2.2
Y280M-4	90.0	125	164	1480	93.5	0.89	92.4	0.85	91.6	0.81	1.9	7.0	2.2
Y315S-4	110	150	201	1480	93.5	0.89	92.5	0.86	91.6	0.82	1.8	6.8	2.2
Y315M-4	132	180	240	1490	94.0	0.89	92.8	0.86	92.0	0.82	1.8	6.8	2.2
Y315L1-4	160	220	289	1490	94.5	0.89	93.2	0.86	92.9	0.82	1.8	6.8	2.2
Y315L2-4	200	270	361	1490	94.5	0.89	93.2	0.86	92.9	0.82	1.8	6.8	2.2
Y335M-4	250	340	459	1485	94.7	0.87	93.6	0.87	93.0	0.83	1.6	6.8	2.2
Y335L-4	315	430	576	1485	94.2	0.87	94.1	0.87	93.8	0.83	1.6	6.9	2.2



Y SERIES THREE-PHASE ASYNCHRONOUS INDUCTION MOTOR

技术数据 TECHNICAL DATA

型号 Model	功率 Output		满载时 Full load				75%负载时 75% load		50%负载时 50% load		堵转转矩 Tstar/Un	堵转电流 Ist/In	最大转矩 Tmax/Tn
	kW	HP	电流 Current (A)	转速 Speed (r/min)	效率 Eff (%)	功率因数 Power Factor	效率 Eff (%)	功率因数 Power Factor	效率 Eff (%)	功率因数 Power Factor			
同步转速1000转/分(6极)380V 50Hz SynchronousSpeed1000r/min(6poles)													
Y90S-6	0.75	1.00	2.25	910	72.5	0.70	70.5	0.61	66.9	0.47	2.0	5.5	2.2
Y90L-6	1.10	1.50	3.16	910	73.5	0.72	72.0	0.61	67.7	0.47	2.0	5.5	2.2
Y100L-6	1.50	2.00	3.97	940	77.5	0.74	76.3	0.66	73.5	0.53	2.0	6.0	2.2
Y112M-6	2.20	3.00	5.61	940	80.5	0.74	79.2	0.66	77.3	0.53	2.0	6.0	2.2
Y132S-6	3.00	4.00	7.23	960	83.0	0.76	82.0	0.69	79.2	0.57	2.0	6.5	2.2
Y132M1-6	4.00	5.50	9.40	960	84.0	0.77	83.1	0.70	79.9	0.58	2.0	6.5	2.2
Y132M2-6	5.50	7.50	12.6	960	85.3	0.78	84.4	0.72	82.1	0.61	2.0	6.5	2.2
Y160M-6	7.50	10.0	17.0	970	86.0	0.78	85.2	0.72	83.6	0.63	2.0	6.5	2.0
Y160L-6	11.0	15.0	24.6	970	87.0	0.78	86.6	0.72	85.4	0.62	2.0	6.5	2.0
Y180L-6	15.0	20.0	31.4	970	89.5	0.81	88.5	0.72	86.8	0.63	1.8	6.5	2.0
Y200L1-6	18.5	25.0	37.7	970	89.8	0.83	88.7	0.75	87.5	0.69	1.8	6.5	2.0
Y200L2-6	22.0	30.0	44.6	970	90.2	0.83	89.3	0.77	87.7	0.65	1.8	6.5	2.0
Y225M-6	30.0	40.0	59.5	980	90.2	0.85	89.6	0.75	88.6	0.71	1.7	6.5	2.0
Y250M-6	37.0	50.0	72.0	980	90.8	0.86	90.4	0.80	89.3	0.73	1.8	6.5	2.0
Y280S-6	45.0	60.0	85.4	980	92.0	0.87	91.2	0.82	89.7	0.75	1.8	6.5	2.0
Y280M-6	55.0	75.0	104	980	92.0	0.87	91.5	0.81	90.2	0.74	1.8	6.5	2.0
Y315S-6	75.0	100	141	990	92.8	0.87	92.3	0.82	90.8	0.74	1.6	6.5	2.0
Y315M-6	90.0	125	169	990	93.2	0.87	92.8	0.83	91.2	0.76	1.6	6.5	2.0
Y315L1-6	110	150	206	990	93.5	0.87	92.9	0.83	91.8	0.76	1.6	6.5	2.0
Y315L2-6	132	180	246	990	93.8	0.87	93.1	0.83	92.0	0.76	1.6	6.5	2.0
Y335M1-6	160	220	300	990	94.1	0.86	93.4	0.84	92.6	0.77	1.9	6.7	2.0
Y335M2-6	200	270	370	990	94.3	0.86	93.6	0.84	92.8	0.77	1.9	6.7	2.0
Y335L-6	250	340	465	990	94.7	0.86	94.0	0.84	93.0	0.77	1.9	6.7	2.0
同步转速750转/分(8极)380V 50Hz SynchronousSpeed750r/min(8poles)													
Y132S-8	2.20	3.00	5.85	710	80.5	0.71	79.7	0.62	77.8	0.49	2.0	5.5	2.0
Y132M-8	3.00	4.00	7.72	710	82.0	0.72	81.2	0.64	78.5	0.51	2.0	5.5	2.0
Y160M1-8	4.00	5.50	9.91	720	84.0	0.73	83.6	0.64	81.9	0.53	2.0	6.0	2.0
Y160M2-8	5.50	7.50	13.3	720	85.0	0.74	84.4	0.66	82.3	0.54	2.0	6.0	2.0
Y160L-8	7.50	10.0	17.7	720	86.0	0.75	85.1	0.68	83.2	0.57	2.0	5.5	2.0
Y180L-8	11.0	15.0	24.8	730	87.5	0.77	86.9	0.70	85.1	0.57	1.7	6.0	2.0
Y200L-8	15.0	20.0	34.1	730	88.0	0.76	87.3	0.71	86.4	0.61	1.8	6.0	2.0
Y225S-8		25.0	41.3	730	89.5	0.76	88.5	0.70	87.3	0.61	1.7	6.0	2.0
Y225M-8	22.0	30.0	47.6	730	90.0	0.78	88.8	0.71	87.7	0.62	1.8	6.0	2.0
Y250M-8	30.0		63.0	740	90.5	0.80	90.0	0.72	88.6	0.62	1.8	6.0	2.0
Y280S-8	37.0	50.0	78.2	740	91.0	0.79	90.2	0.72	89.0	0.62	1.8	6.0	2.0
Y280M-8	45.0	60.0	93.2	740	91.7	0.80	91.1	0.72	89.8	0.64	1.8	6.0	2.0
Y315S-8	55.0	70.0	114	740	92.0	0.80	91.5	0.74	90.1	0.64	1.6	6.5	2.0
Y315M-8	75.0	100	152	740	92.5	0.81	92.0	0.76	90.9	0.68	1.6	6.5	2.0
Y315L1-8	90.0	125	179	740	93.0	0.82	92.6	0.77	91.7	0.69	1.6	6.5	2.0
Y315L2-8	110	150	218	740	93.3	0.82	92.8	0.78	91.8	0.70	1.6	6.3	2.0
Y335M1-8	132	180	260	740	93.8	0.81	93.3	0.79	92.3	0.71	1.9	6.3	2.0
Y335M2-8	160	220	314	740	94.0	0.81	93.5	0.79	92.5	0.71	1.9	6.3	2.0
Y335L-8	200	270	392	740	94.3	0.81	93.8	0.79	92.8	0.71	1.9	6.3	2.0
同步转速600转/分(10极)380V 50Hz SynchronousSpeed600r/min(10poles)													
Y315S-10	45	60	101	590	91.5	0.74	90.4	0.68	87.5	0.60	1.5	6.0	2.0
Y315M-10	55		123	590	92.0	0.74	90.9	0.69	87.2	0.61	1.5	6.0	2.0
Y315L2-10	75	100	164	590	92.5	0.75	91.4	0.69	88.1	0.62	1.5	6.0	2.0
Y335M1-10	90	120	190	590	93.0	0.77	91.9	0.69	88.8	0.63	1.3	6.0	2.0
Y335M2-10	110	50	230	590	93.2	0.78	92.1	0.70	89.2	0.63	1.3	6.0	2.0
Y335L-10	132	180	275	590	93.5	0.78	92.4	0.70	89.5	0.64	1.3	6.0	2.0